



NEWINGTON  
LONDON

1 Bedrooms

Apartment

Located in London

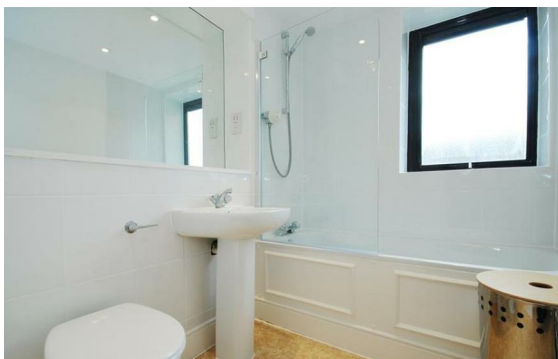
£738 Per Month



info@newingtonstates.com

<http://www.newingtonstates.com>

020 7724 2233



# NEWINGTON LONDON

60 Upper Montagu Street

London

W1H 1SN

020 7724 2233

[info@newingtonstates.com](mailto:info@newingtonstates.com)

A generously sized one-bedroom apartment situated on the third floor of a highly sought-after purpose-built development. The property comprises a large reception room, separate kitchen, double bedroom, and bathroom.

Residents benefit from 24-hour concierge service, lift access, and well-maintained communal gardens. The development is ideally positioned within easy walking distance of Paddington Station, Marble Arch Underground Station, Oxford Street, and the open spaces of Hyde Park.

EPC rating: C

## Energy Efficiency Rating: C

Agents Note: Whilst every care has been taken to prepare these particulars, they are for guidance purposes only. All measurements are approximate and are for general guidance purposes only and whilst every care has been taken to ensure their accuracy, they should not be relied upon and potential buyers/tenants are advised to recheck the measurements.

<http://www.newingtonstates.com>